

Kaituna River Re-diversion and Ōngātoro / Maketū Estuary Enhancement Project

Issue five: August 2015



Consents approved!

All of the resource consents and land designations needed to progress the Kaituna River Re-diversion and Ōngātoro / Maketū Estuary Enhancement Project were approved by a panel of three independent hearing commissioners on 2 July.

The project will return an average of 600,000 cubic metres of fresh water from the Kaituna River into Ōngātoro/Maketū Estuary on every tidal cycle, and create at least 20 hectares of new wetlands.

The planned re-diversion will direct 20 percent of the river's flow back into the estuary while maintaining existing flood protection and channel navigability at Te Tumu cut.

Regional Council Chairman Doug Leeder said that gaining consent is a significant step for the project.

"Tangata whenua and the wider Maketū community have been asking for this work for a long time. With Long Term Plan funding and the consents now approved, we're two steps closer to making it happen for them," he said.

Project manager Pim de Monchy said he's grateful to iwi, landowners, environmental groups and the wider community for their support of the project so far.

The consent and land designation approval is subject to 40 pages of conditions designed to manage the potential environmental effects of the project.

"Since the consent approval decision, three appeals have been lodged so we'll now start working with the Environment Court and appellants to resolve them. If we're successful with that, we'll then start the process of detailed design and construction planning. If the appeals and land acquisition processes go smoothly construction could start by September 2016 at the earliest," Pim said.

Conditions include requirements for the Regional Council to:

- Monitor the ecological changes in the estuary, including shellfish and surrounding wetlands
- Regularly check for and measure bank erosion in the lower Kaituna River. Action will be taken to remedy any erosion that's found to be caused by the re-diversion.
- Compare river flow rates and channel depth at Te Tumu before and after re-diversion work to check modelling accuracy. Action will be taken to maintain channel navigability if monitoring shows that the project has caused a problem.
- Annual checks for foreshore erosion or accretion at Maketū spit, Maketū boat ramp, township and Beach Road. Action will be taken to remedy any negative impacts on these sites found to be caused by the re-diversion.
- Prepare and implement a Tangata Whenua Involvement Plan that outlines how iwi and ahi kaa will be involved in the restoration planning, implementation and monitoring of the project.
- Work with the Kaituna Catchment Control Scheme Manager to maintain existing levels of pastoral drainage service provided by the scheme. Compensation will be paid for the extra pumping required.
- Temporarily close some of the culverts under Ford Rd if the additional flow from the Kaituna River would otherwise unacceptably increase flood risk at Maketū.
- Hold a public information session at least 20 working days before starting construction work, to share information about timing and processes with the community.

A copy of the full consent decision, including conditions and the commissioners' report, is available on Regional Council's website at www.boprc.govt.nz/kaitunamaketurdiversion. See over the page for a summary of the hearing commissioners' findings.

Consent conditions

A panel of three independent planning commissioners considered Regional Council's application for resource consents and land designations for the Kaituna River Re-diversion and Ōngātoro / Maketū Estuary Enhancement Project.

The commissioners considered fifty four public submissions, held a four day hearing at Tukotahi (Corbett) Marae on Ford Rd and completed a site visit, before deciding to grant the consents and confirm the notices of requirement for land designation.

Want more information?

Check out our website for important dates and information on how you can have your say. Get more detailed documents from our website www.boprc.govt.nz/kaitunamaketu or from Project Manager Pim de Monchy at pim.demonchy@boprc.govt.nz or phone 0800 884 881 extn 8518.

Where to from here?



↑ We are here

Project Stage

- ✓ Project plan, data collection and concept designs
- ✓ Pre-consent consultation: Phase one
- ✓ Draft resource consent and designation applications, feasibility designs
- ✓ Pre-consent consultation: Phase two
- ✓ Final resource consent and designation applications, feasibility designs
- ✓ Resource consent and designation processing - **completed 2/7/2015**
- Appeals, land acquisition and detailed designs - **2/7/2015 - 15/9/2016**
- Construction and implementation: Phase one - **16/9/2016 - 15/9/2017**
- Construction and implementation: Phase two - **16/9/2017 - 15/9/2018**
- Implementation and monitoring - **16/9/2018** →



Bay of Plenty Regional Council

5 Quay Street, Whakatāne
1125 Arawa Street, Rotorua
6 Rata Street, Mount Maunganui

Post: PO Box 364, Whakatāne 3158

Phone: 0800 884 880
Fax: 0800 884 882

Pollution Hotline: 0800 884 883
Email: info@boprc.govt.nz
Website: www.boprc.govt.nz

Cleaning up the catchment

The Bay of Plenty Regional Council has adopted a new Long Term Plan for the ten years from 1 July 2015. This almost doubles the amount of funding dedicated to environmental delivery projects in the area from Pāpāmoa to Ōtamarākau and up to Lake Rotoiti, compared with last year.

To help deliver the extra work, two new staff members have joined the Kaituna Catchments Team. Our team of five Land Management staff is keen to help more landowners, community groups, industry and tangata whenua to learn about and improve soil and water quality, to protect biodiversity and to create new wetlands. They can also help explain other council services and rules and put people in touch with the right person.

The team has some specific targets, including:

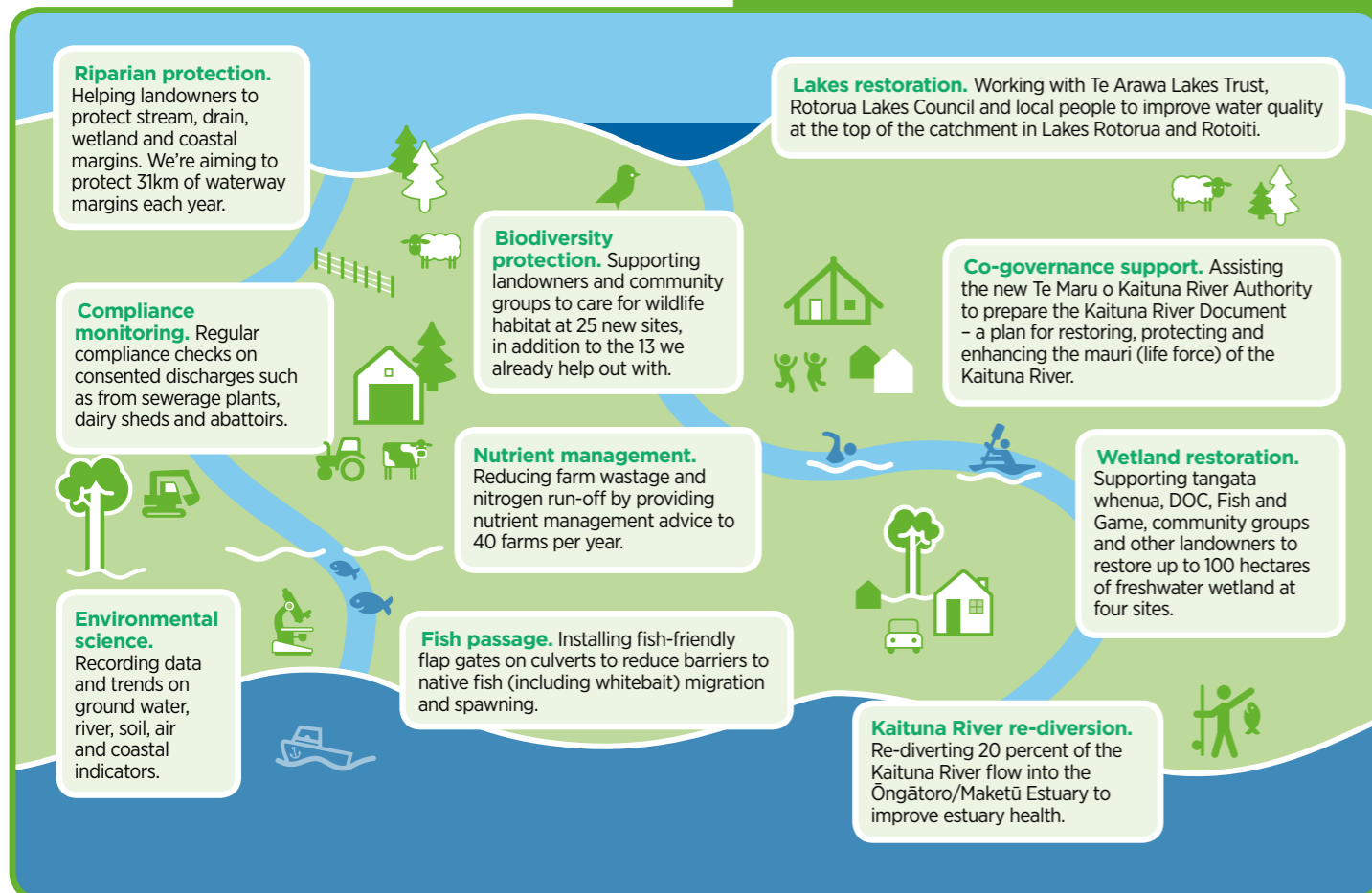
- Protecting 31 kilometres of stream, drain or coastal margin each year from contaminants including bacteria, sediment, nitrogen and phosphorus
- Protecting the 10 highest value ecological sites, and other sites of community significance over the next ten years
- Creating an average of at least 7 hectares of new wetland per year over ten years
- Improving fish passage through at least 3 culverts per year

- Helping volunteers and care groups to protect and restore 21 kilometres of coastline
- Managing Pāpāmoa Hills Regional Park for its cultural and recreational values
- Providing nutrient management advice to 43 dairy farms per year
- Working with two Freshwater Community Groups to help set new rules for water takes and discharges.

The two biggest capital items in Regional Councils Long Term Plan are the Kaituna River Re-diversion and Ōngātoro / Maketū Estuary Enhancement Project, and a new project to create up to 78 hectares of new wetland between the Tauranga Eastern Link motorway bridge and the lower Kaituna Wildlife Management Reserve.

Read a copy of the Kaituna Catchment section of the Long Term Plan from page 56 at <http://www.boprc.govt.nz/media/448081/05-integrated-catchment-management-group-of-activities.pdf>.

Other staff within the Regional Council will also be working in the area. Here's a snapshot of what Council work is planned for the area between Pāpāmoa and Ōtamarākau, and up to the Rotorua Lakes:



Your water, your say

Through the National Policy Statement for Freshwater (NPS), central government has directed Bay of Plenty Regional Council to set limits and rules to maintain or improve water quality and quantity in local catchments.

Kaituna/ Maketū and Pongakawa/Waitahanui are some of the first catchments we're working on and we're setting up Community Groups to provide advice to Council on local values and preferences for water management. This will

include advice on limits and rules where these are required to achieve community needs.

Local people who have a close relationship with or understanding of water sources in the area were invited to put their name forward to be a group member. Expressions of interest closed on 3 August 2015. 59 applications were received and are now being reviewed. Find out more at www.boprc.govt.nz/freshwaterfutures

Wetland Creation

Wetlands play an important role in preventing nutrients and sediments from reaching rivers and streams. They also provide a home for many threatened and rare plants and animals.

It's estimated that 97 percent of the Bay's wetlands have been lost (mainly from the Kaituna and Pongakawa catchments) due to land use change in the last 150 years. That's taken an unsustainable toll on water quality and biodiversity in the area, but it can be reversed.

Regional Council staff have been promoting the creation and restoration of wetlands throughout the Kaituna and

Pongakawa catchments, and this work is set to increase with the adoption of the new Long Term Plan.

So far seven hectares of new wetlands have been created locally, in partnership with private landowners, Pongakawa School, Pāpāmoa College, Western Bay of Plenty District Council, Maketū Ongatoro Wetlands Society, Fish and Game and the Department of Conservation.

If you'd like to get involved with wetland creation and restoration projects, please get in touch with the Kaituna Catchments Team by phoning **0800 884 880**.



Pāpāmoa College students planting at the Kaituna Wildlife Management Reserve wetland, Pah Rd in June 2015. Photo: Kuaka